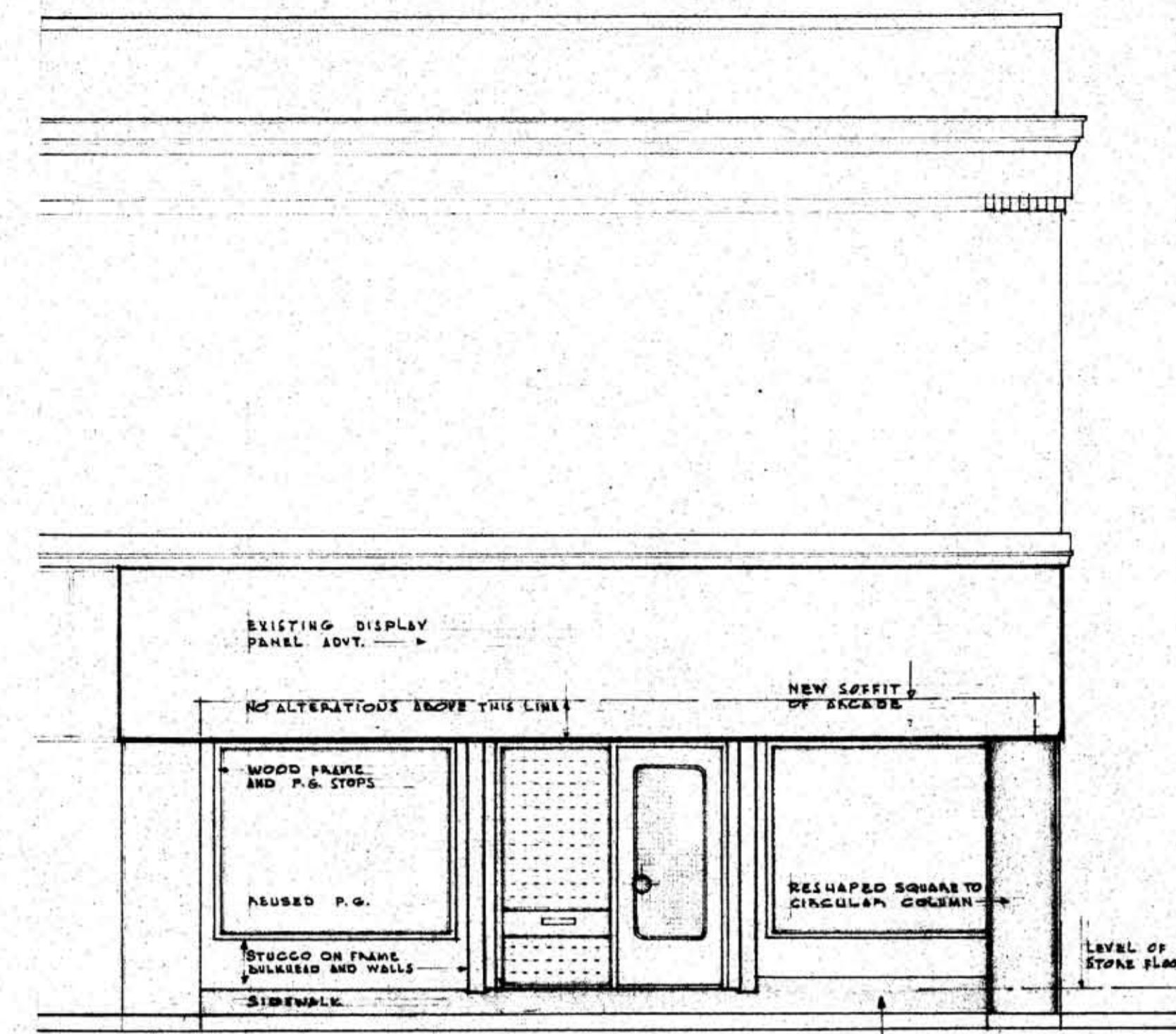
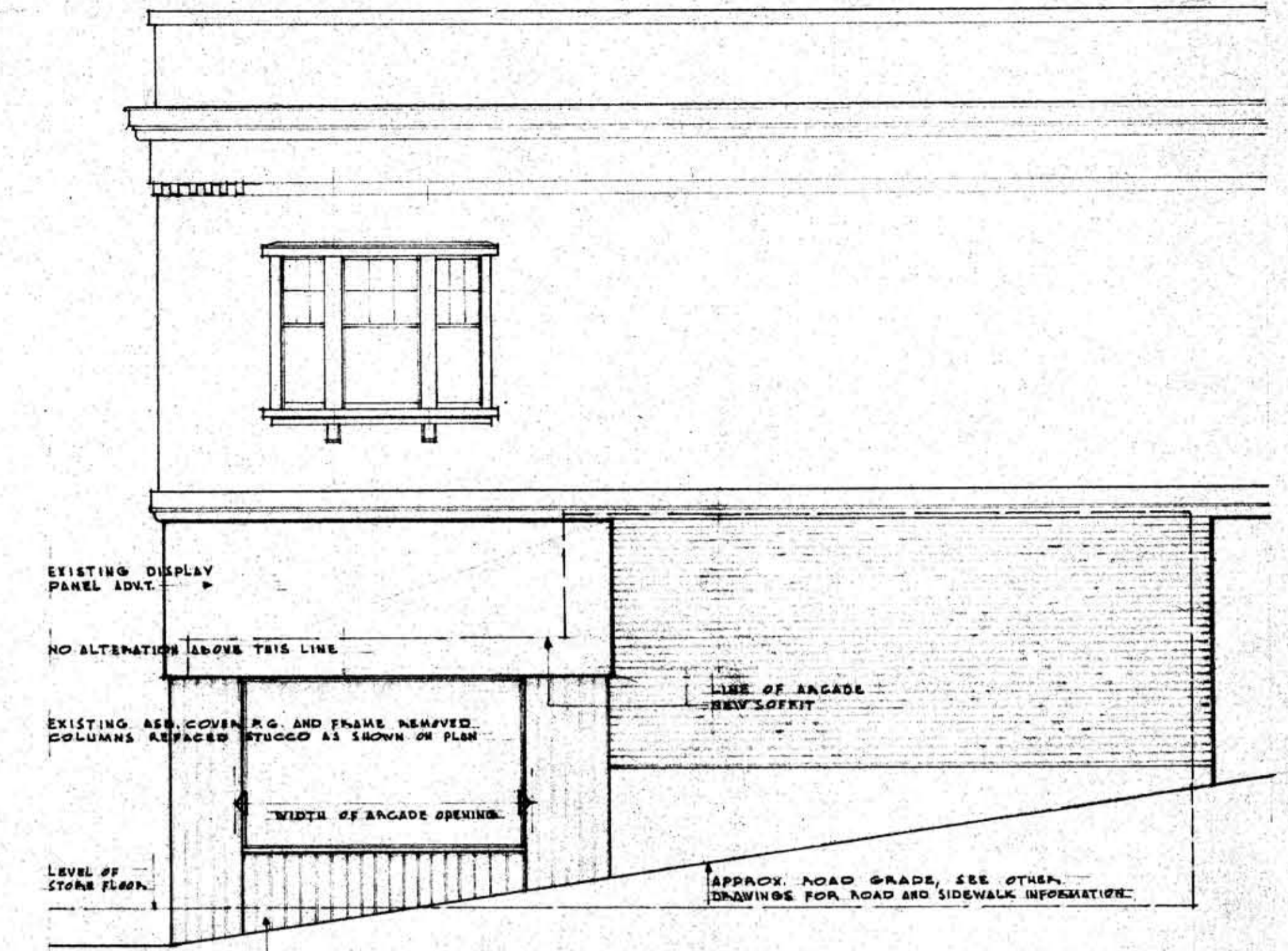


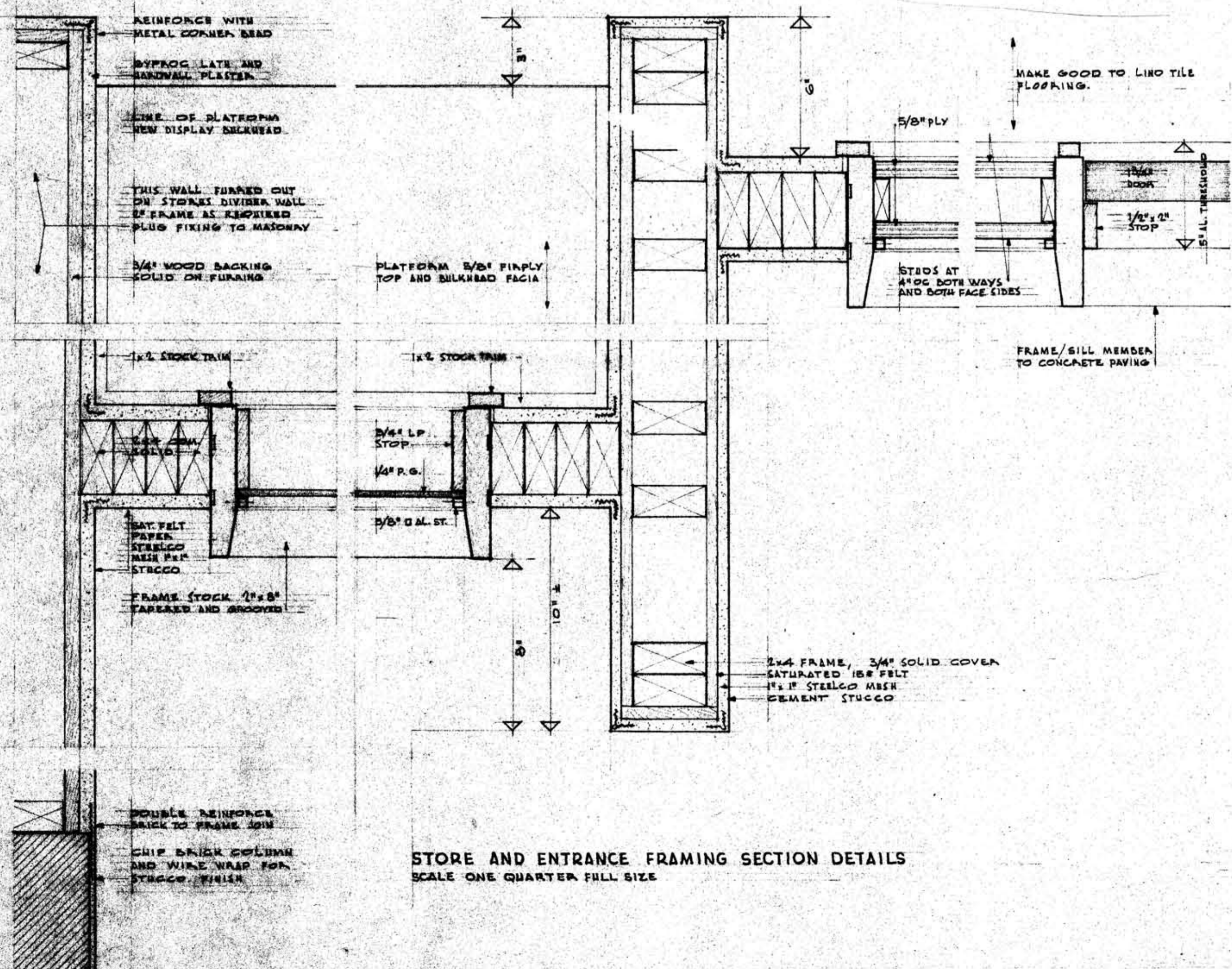
SECTION A SHOWING NEW CONSTRUCTION IN EXISTING STORE
SCALE 1/2" = 1'-0"



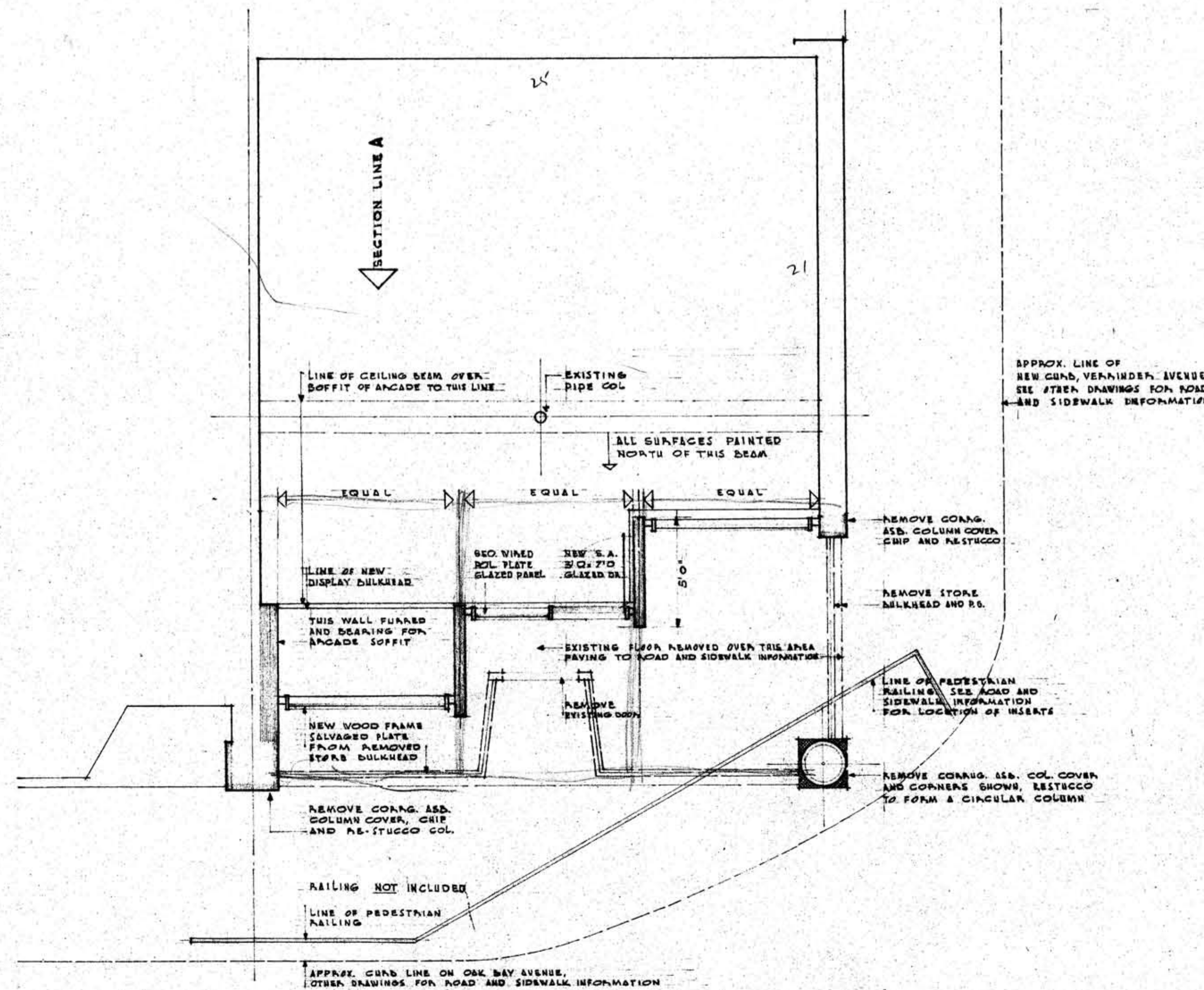
EXISTING ELEVATION OAK BAY AVENUE AND PROPOSED FRONT
SCALE 1/4" = 1'-0"



EXISTING ELEVATION FORT STREET
SCALE 1/4" = 1'-0"



STORE AND ENTRANCE FRAMING SECTION DETAILS
SCALE ONE QUARTER FULL SIZE



PROPOSED FLOOR PLAN SHOWING ALTERATIONS
SCALE 1/4" = 1'-0"

- SPECIFICATION NOTES**
- DEMOLITION
 - REMOVE CORRUG. ASP. COLUMN COVER BELOW DISPLAY PANEL
 - REMOVE STORE FLOOR TO NEW FRONTAGE LINE
 - REMOVE STORE FRONT, SALVAGE PLATE GLASS
 - FOUNDATION
 - CONCRETE, 2000# PSI. PEA GRAVEL AGGREGATE 1 1/2" 7 1/2" GALV. MIX.
 - FRAMING
 - FRAMING TIMBERS #1 COM. FIR. K.L.M.A. STDS. MILLWORK D-BLK.
 - GLAZING
 - REUSE PLATE GLASS, 5/8" ALUMINUM STOPS EXTERIOR
 - DOOR GLAZING 1/8" POL. GEORGIAN WIRED
 - #1 ALUMINUM THRESHOLD
 - HARDWARE DETONG PULL/PUSH EACH SIDE, LETTER SLOT
 - PLASTER: STUCCO
 - INTERNAL PLASTER HANDWALL 2 COATS ON GYPSUM LATH
 - INTERNAL AND EXTERNAL REINFC'D CORNERS INT/EXT.
 - EXTERIOR STUCCO CEMENT SAND LINE PUTTY 2 COATS ON STEELCO ON 15# SATURATED FELT BASE
 - PAINTING
 - ALL NEW STUCCO 3 COAT BAPROCK
 - ALL NEW PLASTER 2 COAT BAPTRONE
 - ALL WOOD TRIM PRIMER AND 3 COAT, PORCELITE FINISH
 - GYPSUM FACIA 2 COAT BAPTRONE
 - SELECTION OF COLOURS APPROVAL BEFORE PAINTING

THIS DRAWING DOES NOT INCLUDE DETAILED INFORMATION COVERING ELECTRICAL ALTERATIONS NOR REWIRING. SEE OTHER DRAWINGS FOR ROAD AND SIDEWALK DATA INCLUDING PEDESTRIAN RAILING THROUGH ARCADE.