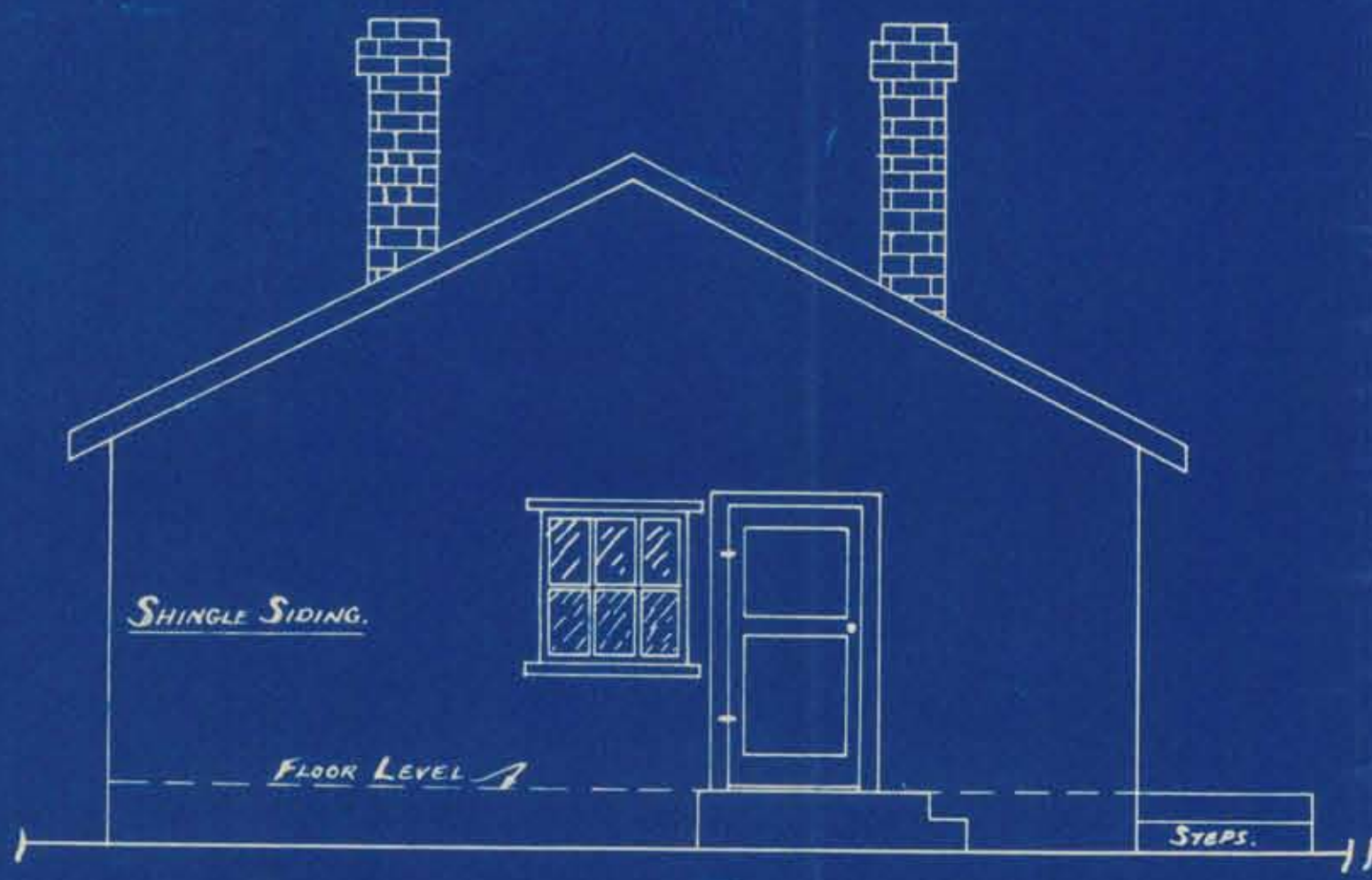
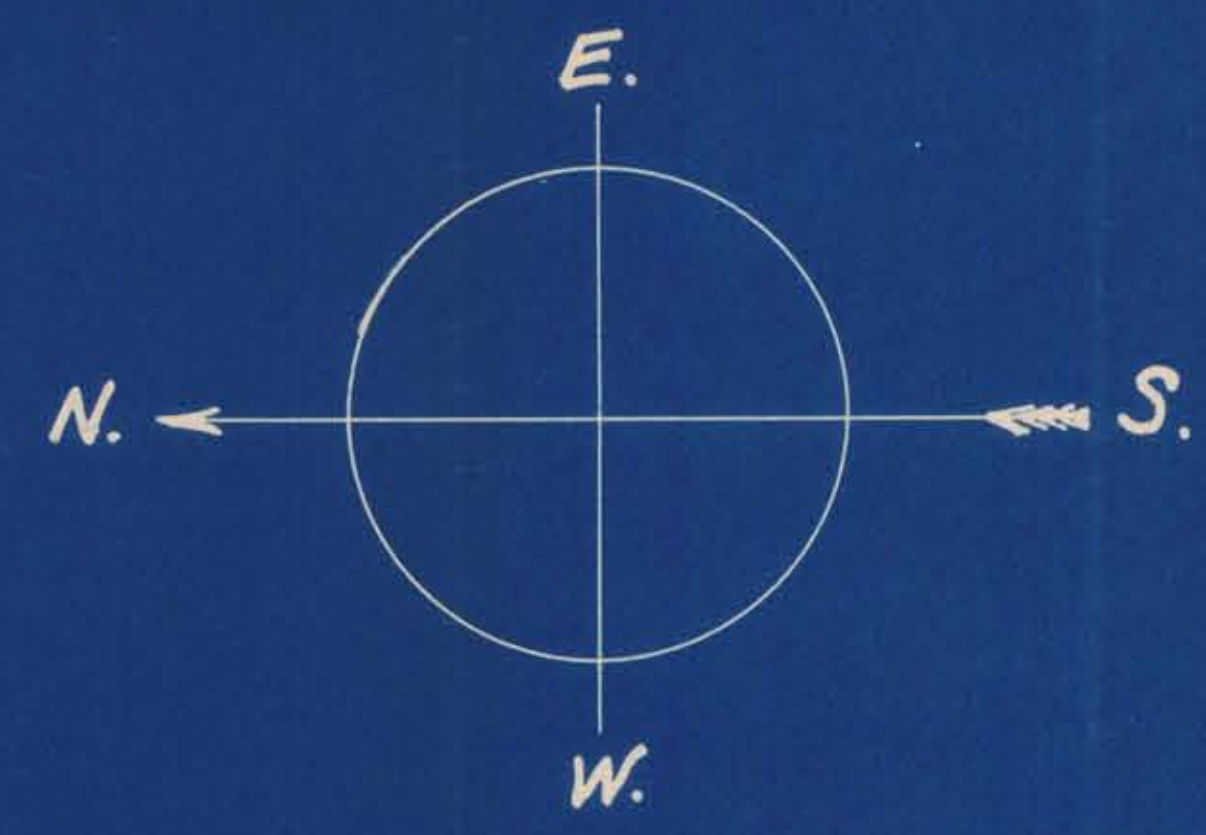
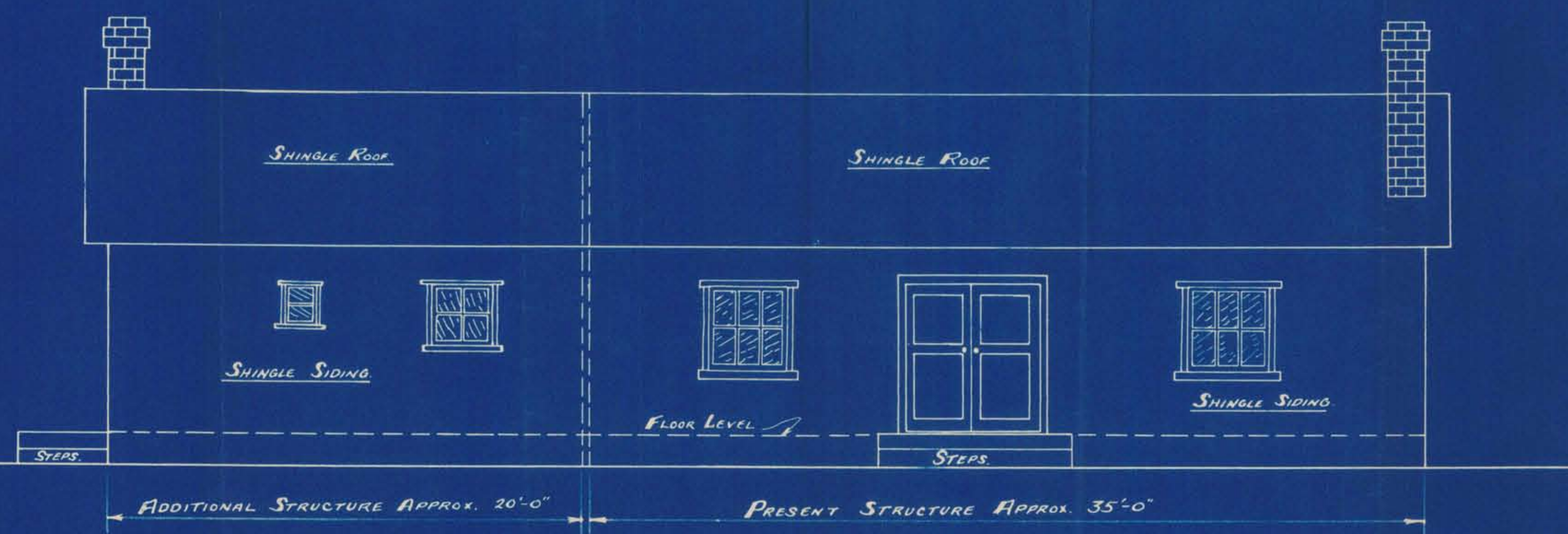


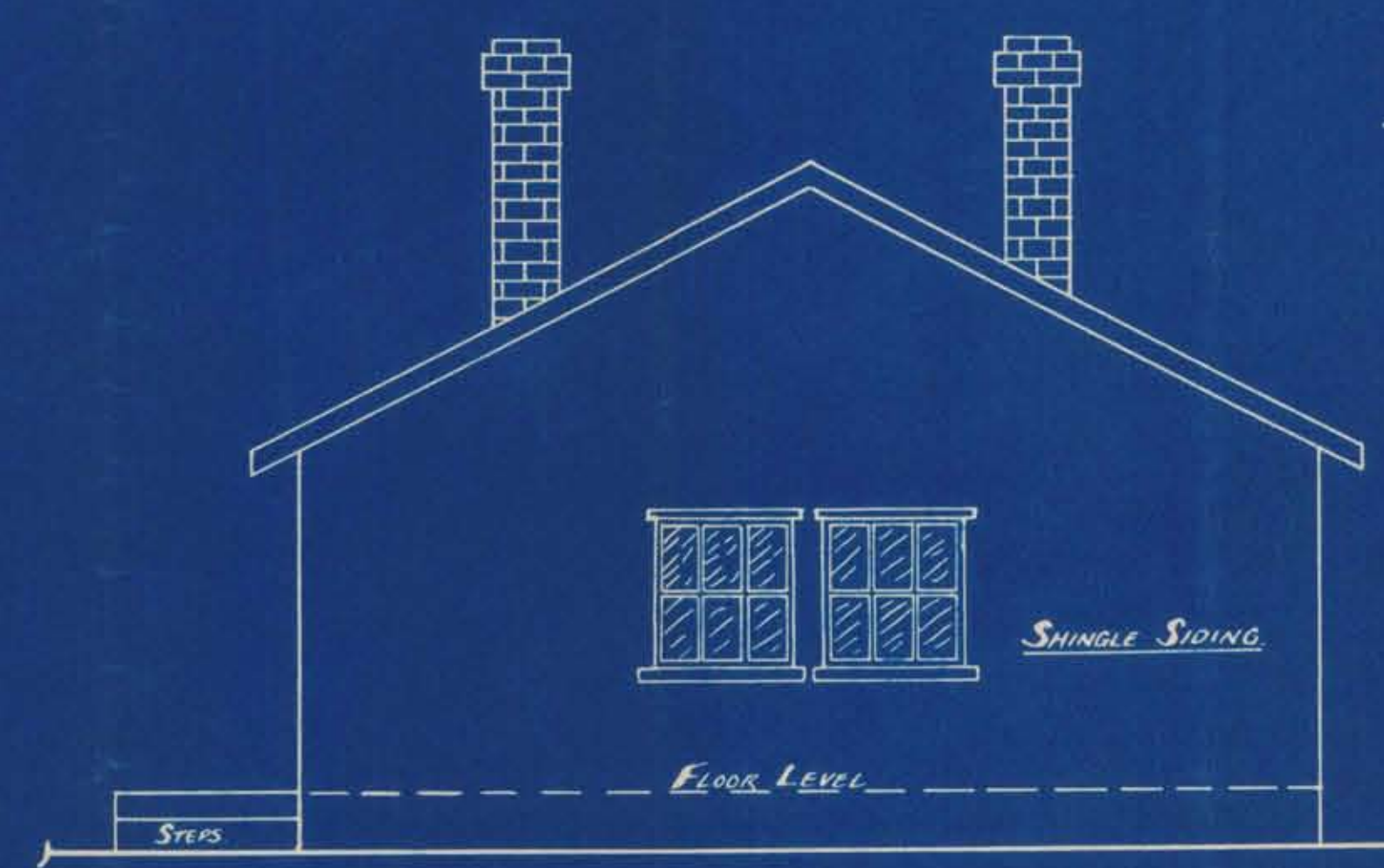
FLOOR PLAN.



REAR ELEVATION.  
LOOKING SOUTH.



SIDE ELEVATION.  
LOOKING EAST.



FRONT ELEVATION.  
LOOKING NORTH.

~ PROPOSED ALTERATIONS TO JAMES BAY COMMUNITY HALL. ~

DATE: ~ MAY-8-1944.

SCALE 1/4" = 1'

DRAWN BY: ~ A.W. HILL.